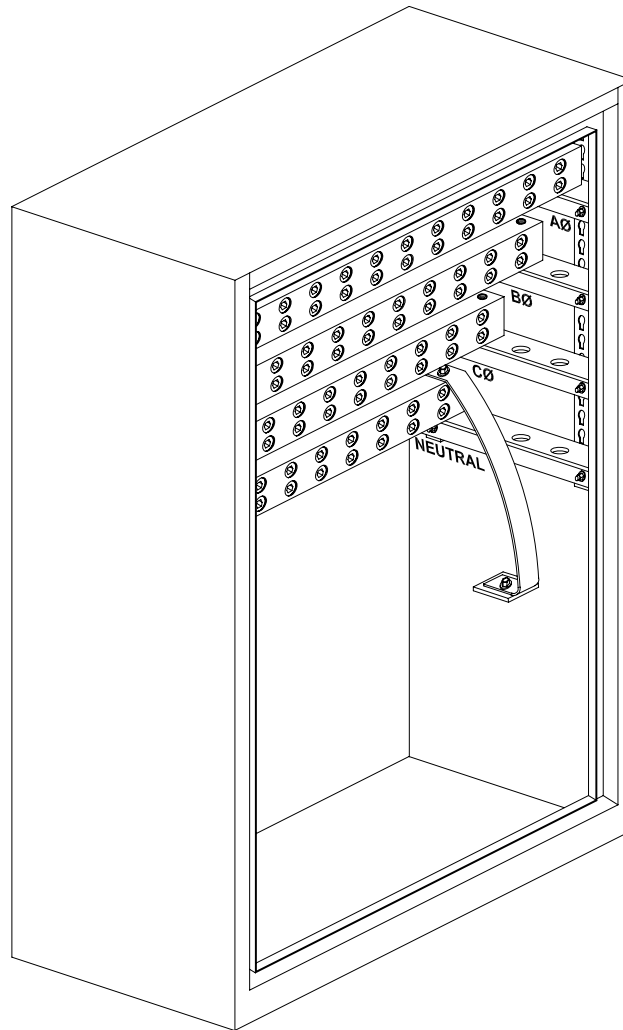


NOTES:

1. FOR LOCATIONS WHERE THERE WILL BE THREE OR MORE METERS INITIALLY OR IN THE FUTURE.
2. MAXIMUM COMBINED RATING OF ALL SERVICES CONNECTED IN EACH JUNCTION CABINET SHALL NOT EXCEED 1600 AMPS.
3. A MAXIMUM OF EIGHT CABLES PER PHASE WILL BE PERMITTED TO ENTER THE JUNCTION CABINET FOR CONNECTION.
4. THE MAXIMUM CABLE SIZE CONNECTED IN THE JUNCTION CABINET SHALL BE 750 KCMIL.
5. THE COMPANY SHALL MAKE ALL CONNECTIONS IN THE JUNCTION CABINET.
6. THE COMPANY SHALL SUPPLY THE JUNCTION CABINET, STK. #1703-743, AND IT SHALL BE INSTALLED BY THE ELECTRICAL CONTRACTOR.
7. THE CONTRACTOR SHALL PROVIDE AND INSTALL ALL CABLE TROUGHS. THE HORIZONTAL TROUGHS SHALL BE RATED NEMA 3R, MINIMUM 14 GAUGE, AND THE VERTICAL TROUGHS SHALL HAVE A GASKETED COVER OR MAY BE CONDUIT.
8. ALL SERVICE CONDUCTORS SHALL BE BROUGHT TO THE JUNCTION CABINET FOR TERMINATION. NO TAPS ARE PERMITTED IN THE TROUGH.
9. THE CUSTOMER'S CABLES MAY EXIT THE CABINET ON EITHER SIDE OR THE BOTTOM. SEE DRAWING GB6-030 FOR DIMENSIONS.
10. THE COMPANY ENGINEER SHALL DETERMINE THE NUMBER OF JUNCTION CABINETS THAT WILL BE USED AND THEIR LOCATIONS.
- ▶ 11. ALL METALLIC RACEWAYS AND WIREWAYS SHALL BE GROUNDED AND BONDED IN ACCORDANCE WITH THE INDIANA ELECTRICAL CODE, ARTICLE 250.

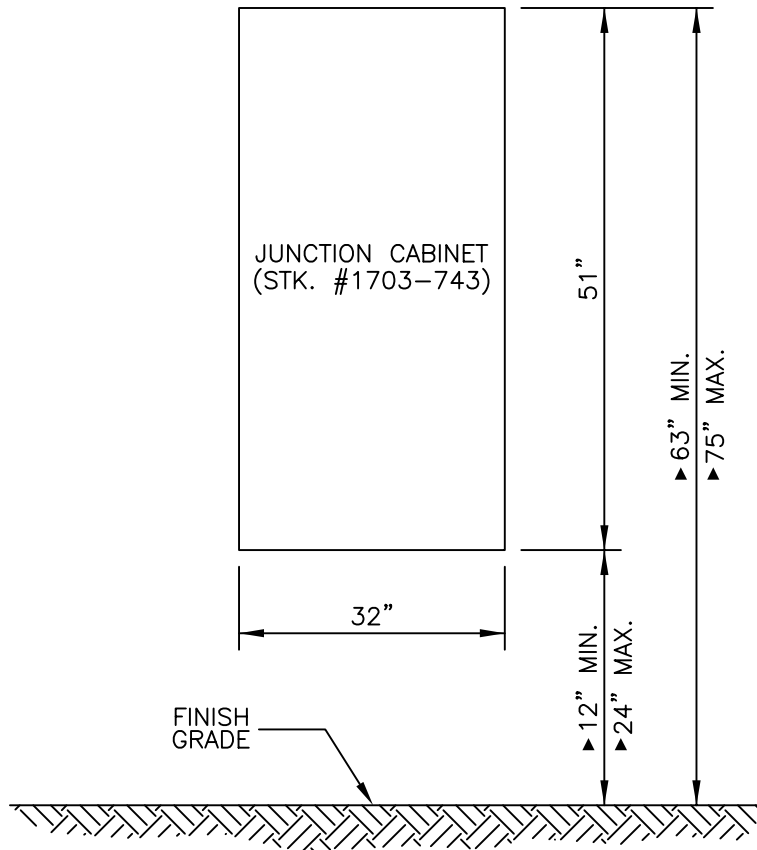
**TYPICAL JUNCTION CABINET
FOR MULTIPLE SERVICES
UNDERGROUND INSTALLATION
600 VOLTS AND BELOW, 3 PHASE, 4 WIRE
400 A MAXIMUM SERVICE PER POSITION**



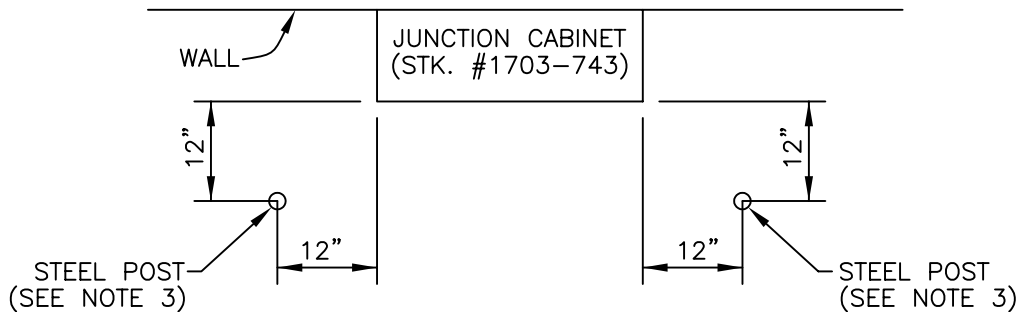
NOTES:

1. THE TERMINAL BARS MAY BE REMOVED TO FACILITATE THE MOUNTING OF THE CABINET.
2. THE TERMINAL BARS SHALL BE REINSTALLED WITH A IN THE TOP FORWARD POSITION, THE NEUTRAL IN THE BOTTOM REAR POSITION, AND THE REST STAGGERED AS SHOWN.
3. THE GROUNDING STRAP SHALL BE REATTACHED AS SHOWN.

**TERMINAL BAR ARRANGEMENT
FOR JUNCTION CABINET**



ELEVATION

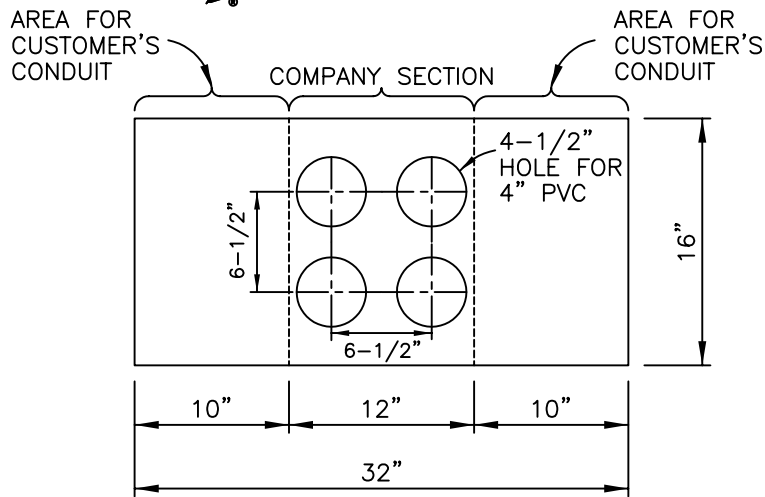


PLAN

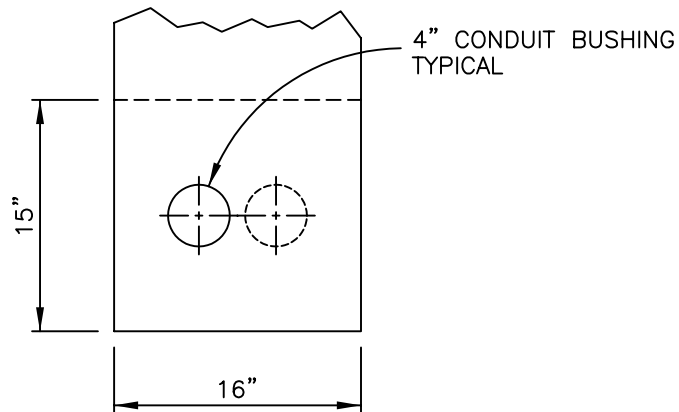
NOTES:

1. CONTRACTOR SHALL INSTALL JUNCTION CABINET AT LOCATIONS APPROVED BY THE COMPANY ENGINEERING.
2. CABINET WEIGHS APPROXIMATELY 60 POUNDS.
3. CUSTOMER TO FURNISH AND INSTALL 7' CONCRETE FILLED 6" STEEL POST 4' ABOVE GRADE SET IN CONCRETE WHEN EXPOSED TO VEHICULAR TRAFFIC.

**MOUNTING DETAILS FOR
JUNCTION CABINET**



CONDUIT LAYOUT
BOTTOM OF JUNCTION CABINET

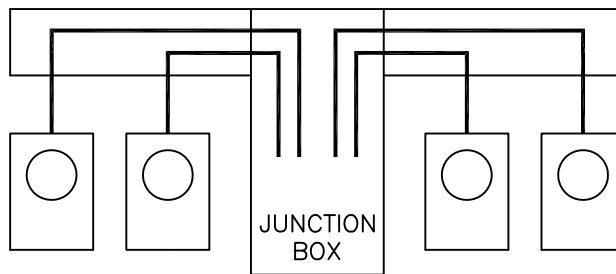
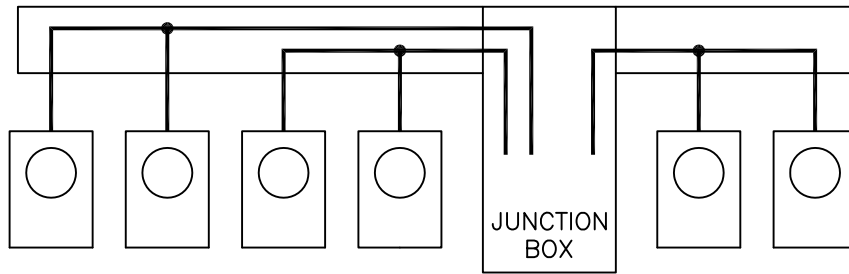
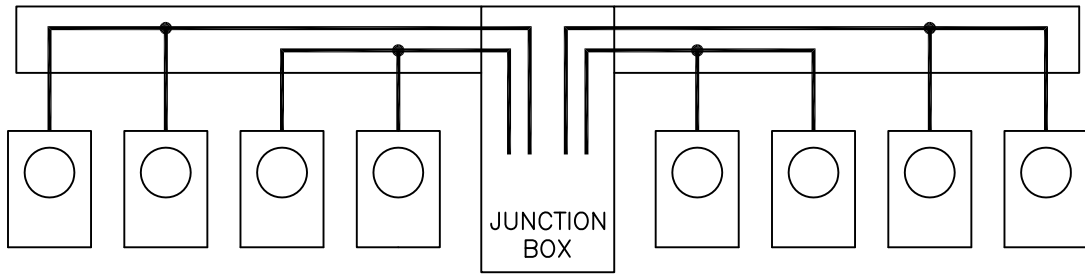


CONDUIT LAYOUT FOR LEFT OR RIGHT
SIDE OF JUNCTION CABINET

NOTES:

1. CONTRACTOR SHALL INSTALL 4-4" GRAY PVC CONDUITS FOR THE COMPANY USE.
2. CUSTOMER'S SERVICE CABLES MAY EXIT CABINET THROUGH THE BOTTOM OR SIDES AS SHOWN.

**CONDUIT LOCATIONS IN
JUNCTION CABINET FOR MULTIPLE
UNDERGROUND SERVICES**



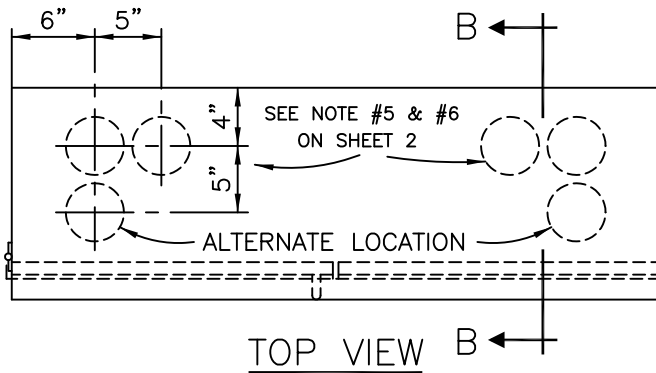
TYPICAL MULTIPLE SERVICES

NOTES :

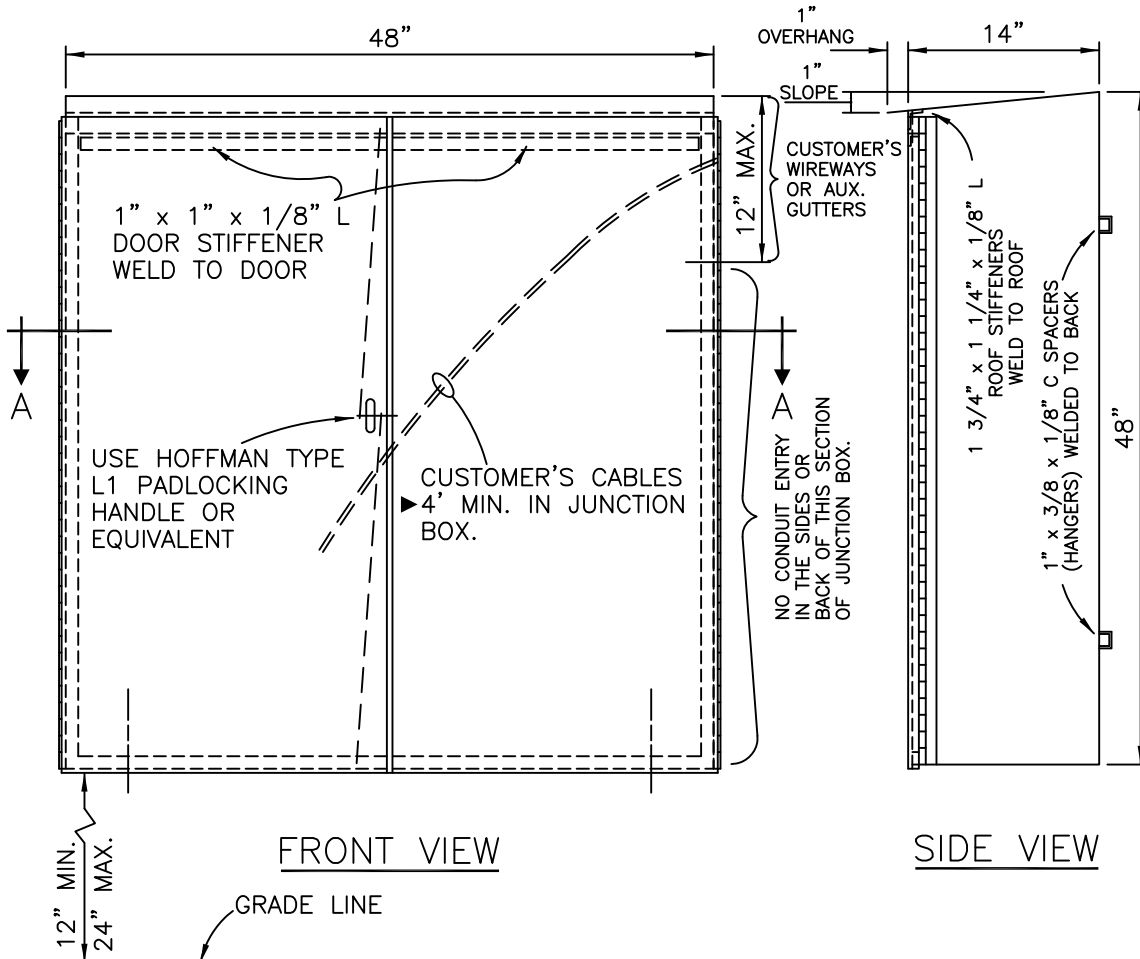
1. A TOTAL OF FOUR CABLES PER PHASE WILL BE PERMITTED TO ENTER JUNCTION BOX FOR CONNECTION TO COMPANY CABLES.
2. WHEN A GENERAL AND HEATING SERVICE IS REQUIRED FOR A CUSTOMER THE CONTRACTOR SHALL CONNECT THEM TOGETHER IN THEIR WIREWAY. (SEE LAYOUTS ABOVE)
3. MAXIMUM COMBINED RATING OF ALL SERVICES CONNECTED IN EACH JUNCTION BOX SHALL NOT EXCEED 1600 A. (SEE LAYOUTS ABOVE)
4. MAXIMUM SIZE CABLE CONNECTED IN JUNCTION BOX SHALL BE 500 KCMIL.
5. THE COMPANY SHALL MAKE ALL CONNECTIONS IN THE SERVICE JUNCTION BOX.
6. CUSTOMER TO FURNISH AND INSTALL 7' CONCRETE FILLED 6" STEEL POST 4' ABOVE GRADE SET IN CONCRETE WHEN EXPOSED TO VEHICULAR TRAFFIC.

NOT FOR NEW CONSTRUCTION
FOR MAINTENANCE ONLY

**TYPICAL CUSTOMER'S JUNCTION BOX FOR
 THREE PHASE MULTIPLE 100 A AND
 200 A UNDERGROUND SERVICES**



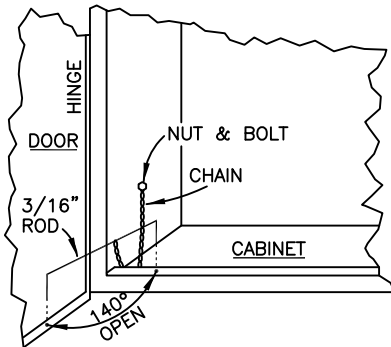
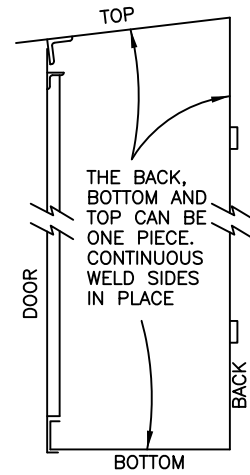
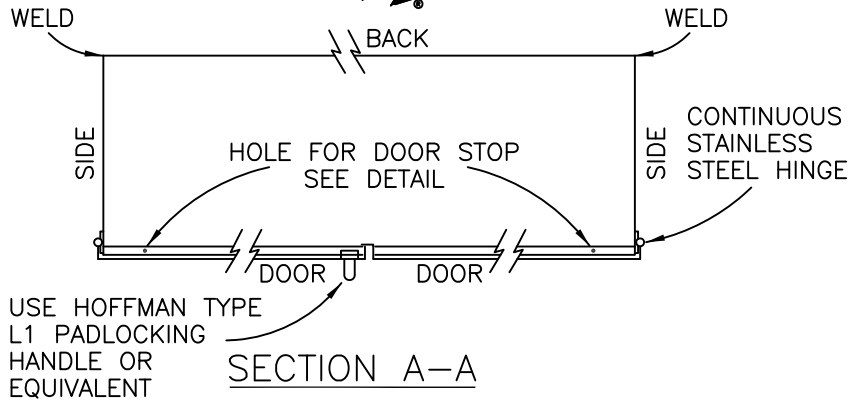
USE CONTINUOUS STAINLESS STEEL HINGES (WITH STAINLESS STEEL PIN) MARLBORO HINGE SS4024 WITH HOLES OR EQUIVALENT. INSTALL AFTER GALVANIZING, SPACE BOLTS AND NUTS MAXIMUM OF 6" APART AND PEEN BOLTS TO NUTS. DRILL HOLES IN CABINET BEFORE GALVANIZING.



NOTES:

1. SEE DRAWING GB6-040 FOR LAYOUT.
2. SEE DRAWING GB6-060 FOR NOTES AND DETAILS.

NOT FOR NEW CONSTRUCTION
FOR MAINTENANCE ONLY
TYPICAL CUSTOMER'S JUNCTION BOX
FOR MULTIPLE UNDERGROUND SERVICES



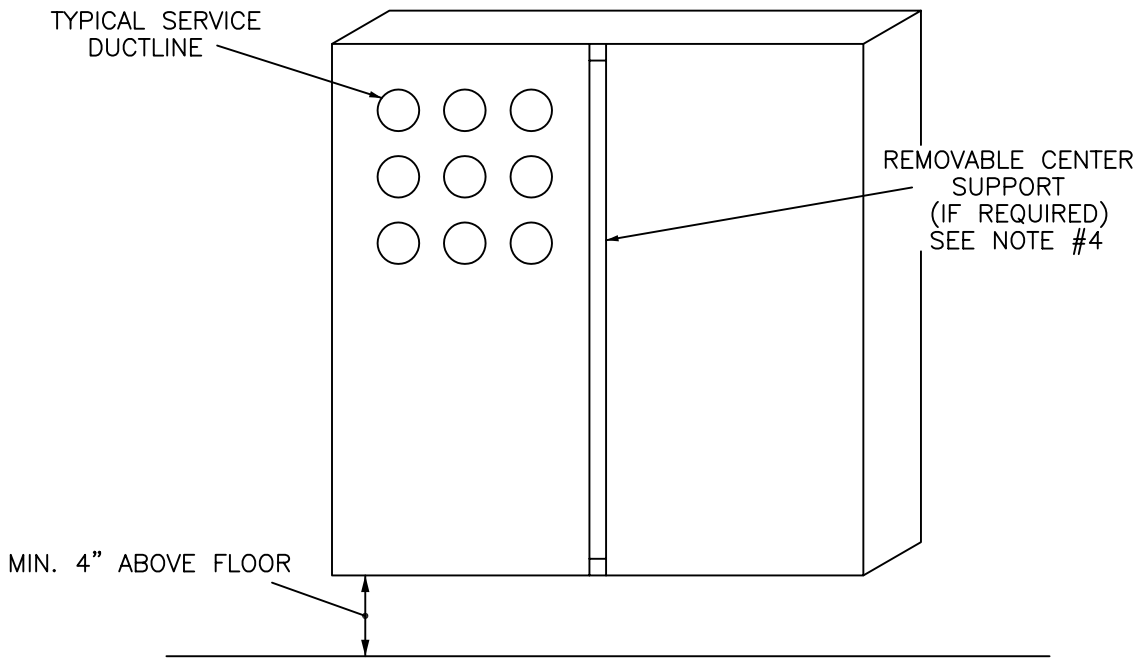
DOOR STOP DETAIL

NOTES:

1. FRONT DOORS SHALL BE HINGED ON THE SIDES. USE HOFFMAN TYPE L1 PADLOCKING HANDLE OR EQUIVALENT (USE 2-POINT LATCHING SYSTEM).
2. 12 GAUGE M.S.G. SHEET METAL (ALUMINUM OR STEEL) SHALL BE USED.
3. STEEL JUNCTION BOX SHALL BE GALVANIZED OR SHOP-PAINTED WITH RUST INHIBITING PAINT INSIDE AND OUTSIDE AFTER FABRICATION. IF CABINET IS SHOP PAINTED USE SS4024 WITHOUT HOLES OR EQUIVALENT HINGE AND CONTINUOUS WELD IN PLACE. ANY HOLE OR HOLES DRILLED AFTER GALVANIZING OR PAINTING SHALL BE TREATED WITH RUST INHIBITING PAINT.
4. LOCATION AND SIZE OF JUNCTION BOX SHALL BE APPROVED BY THE ENGINEERING DEPARTMENT.
5. 4" CONDUITS IN BOTTOM OF JUNCTION BOX BY CUSTOMER, FOR COMPANY CABLES, AS FOLLOWS;
 - 2 CONDUITS REQUIRED FOR 800 A OR LESS OF CONNECTED SERVICES.
 - 3 CONDUITS REQUIRED FOR 801 A TO 1200 A OF CONNECTED SERVICES.
 - 4 CONDUITS REQUIRED FOR 1201 A TO 1600 A OF CONNECTED SERVICES. (MAXIMUM)
6. CUSTOMER'S WIRES MAY ENTER BOTTOM OF THE JUNCTION BOX AT THE DISCRETION OF THE COMPANY.
7. BONDING LUG AND JUMPER PROVIDED AND INSTALLED BY CONTRACTOR.
8. CUSTOMER TO FURNISH AND INSTALL 7' CONCRETE FILLED 6" STEEL POST 4' ABOVE GRADE SET IN CONCRETE WHEN EXPOSED TO VEHICULAR TRAFFIC.
9. LEFT HAND DOOR OVERLAPS THE RIGHT HAND DOOR.

NOT FOR NEW CONSTRUCTION
FOR MAINTENANCE ONLY

**TYPICAL CUSTOMER'S JUNCTION BOX
 FOR MULTIPLE UNDERGROUND SERVICES**



NOTES:

1. LOCATION AND SIZE OF JUNCTION BOX SHALL BE APPROVED BY THE ENGINEERING DEPARTMENT.
2. 12 GAGE SHEET METAL SHALL BE USED.
3. STEEL JUNCTION BOX SHALL BE GALVANIZED OR SHOP PAINTED WITH A RUST INHIBITING PAINT INSIDE AND OUTSIDE AFTER FABRICATION. ANY HOLE OR HOLES DRILLED AFTER GALVANIZING OR PAINTING SHALL BE TREATED WITH RUST INHIBITING PAINT.
4. COVER MAY BE ATTACHED WITH SHEET METAL SCREWS. JUNCTION BOXES REQUIRING COVERS OVER 16 SQ. FT. SHALL BE CONSTRUCTED WITH A REMOVABLE CENTER SUPPORT TO ACCOMMODATE A 2 PIECE COVER.
5. JUNCTION BOX SHALL BE LOCATED IN SUCH A MANNER TO ALLOW THE INCOMING SERVICE DUCTLINE TO BE IN A SINGLE QUADRANT WITH CUSTOMER'S WIRES TO ENTER ANY OF THE OTHER THREE QUADRANTS.
6. BONDING LUG AND JUMPER PROVIDED AND INSTALLED BY CONTRACTOR.

**TYPICAL CUSTOMERS JUNCTION BOX
UNDERGROUND NETWORK SERVICE**